



# EXILIS FAQ's

## What is EXILIS?

EXILIS is an effective aesthetic device that delivers highly controlled, volumetric heating to tissue for measurable cosmetic results.

Scientifically proven and clinically tested, EXILIS uses focused Radio Frequency (RF) technology to redefine appearances by reducing wrinkles, treating laxity and reshaping the body – from head to toe – in just four comfortable treatment sessions.

Dr Michael Miroshnik  
Plastic & Cosmetic Surgeon

EXILIS is ideal for treating wrinkles, skin laxity and shaping of the face and body.

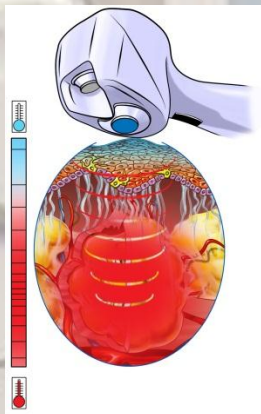
Common areas of treatment include:

- Mouth area
- Eye area
- Chin area
- Jaw line
- Décolletage
- Abdomen
- Back
- Arms
- Legs
- Knees

## How does EXILIS work?

### 1. FAT REDUCTION

EXILIS combines ultrasound and high-frequency energy to access and treat problem areas. EXILIS targets deeper fat layers, while protecting fine dermal structures.



High-frequency energy causes targeted deep thermal heating, initiating metabolic activity and accelerating local fat tissue lipolysis processes. Fat cell volume decreases and the fat layer is reduced. Ultrasound waves help to breakdown the fat structures, causing the separation of the fat cells into individual units. The exposed fat cells are then more isolated and accessible.



Dr Michael Miroshnik  
Plastic & Cosmetic Surgeon

## **2. SKIN TIGHTENING**

To target superficial skin layers, controlled heating is used to redefine loose skin and smooth wrinkles. The RF energy causes the collagen supporting tissue to remodel and tighten, thereby stimulating and strengthening the collagen network to improve skin laxity and texture.

### **How long does the treatment take?**

Approximately 10-15 minutes per area.

### **How many treatments will I need to see results?**

Typically, 4 treatments over a 4 week period are recommended. However many people see results after their first treatment.

### **What is the cost of an EXILIS treatment?**

One session starts at \$350. See below for our introductory offer:

	Normal Rate	*Introductory Rate
1 area	\$350	\$350
2 areas	\$500	\$350
3 areas	\$650	\$500
4 areas	\$800	\$650
5 areas	\$950	\$800

NB. Examples of an area include lower abdomen, upper abdomen, buttock (per side), outer thigh (per side), inner thigh (per side), hip (per side), chin etc

\*Introductory rate is valid until 1<sup>st</sup> August 2011

**Contact us for more information and bookings**

**1300 88 90 50**